

Kaunas, 25 July 2006

An Introduction to the

# German Strategy for Sustainable Development

**M.Sc. Maria Elander**

Officer for Environmental Policy and Sustainable Development

NABU



# Overview

- Who and what is NABU?
- Sustainable development in German policy making
- Developing a strategy for sustainable development
- Focus areas of the strategy
- Indicators for sustainable development
- Outlook – 2006 and beyond

# NABU in Numbers

## NABU in Germany

- Since 1899
- 406.000 members
- 1.500 local groups
- 25.000 volunteers



Leading German non-profit NGO for nature conservation and environmental protection

## NABU in Europe

- German Birdlife Partner
- Cooperation with the European Environment Bureau

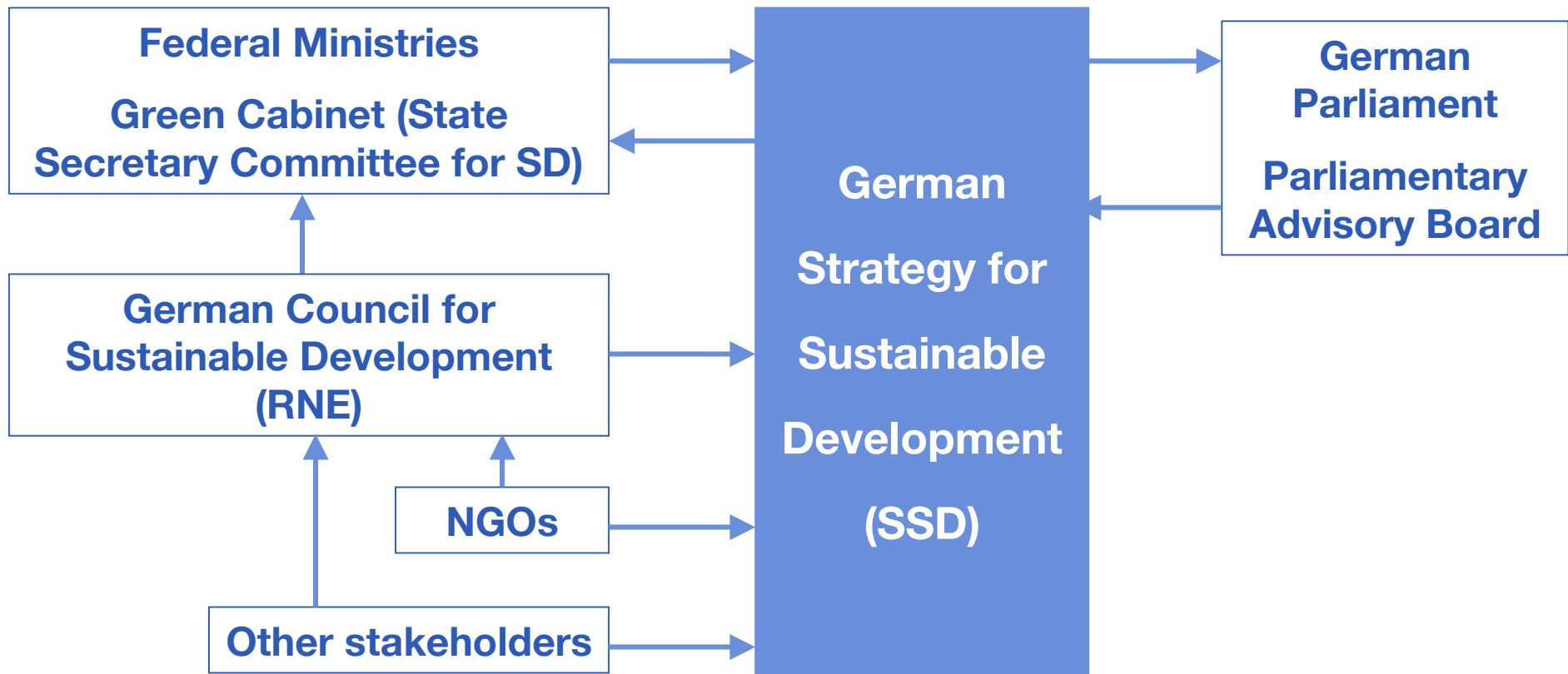


# NABU – Thematic Overview

- Nature conservation
- Energy & Climate change
- Mobility
- Agriculture
- Sustainable development
- Waste & Recycling
- Genetic engineering, GMOs



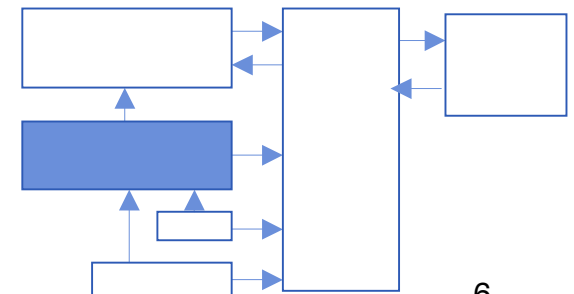
# Sustainable Development in German Policy Making



# Sustainable Development in German Policy Making

## German Council for Sustainable Development (RNE)

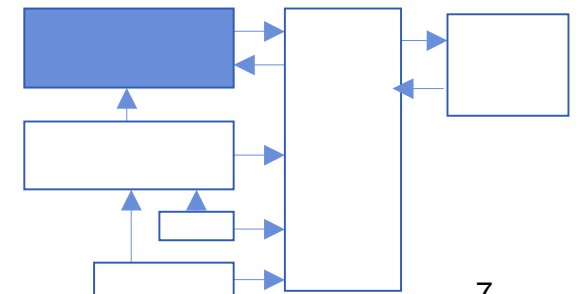
- Established by the German Government in 2001
- 17 members of the public (2 environmental NGOs)
- Tasks
  - contributions for implementing the SSD
  - designation of specific areas of action and projects
  - raising public awareness of sustainability



# Sustainable Development in German Policy Making

## Green Cabinet

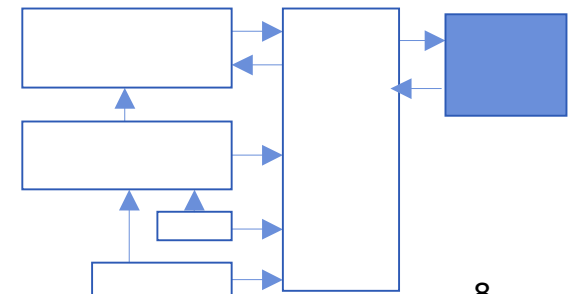
- Permanent secretary's committee for Sustainable Development (all ministries)
- Established by the German Government in 2000
- Positioned under the Chancellorship
- Tasks
  - ensuring that the concept of sustainability is integrated in all political fields
  - setting the emphasis of the further development of the SSD



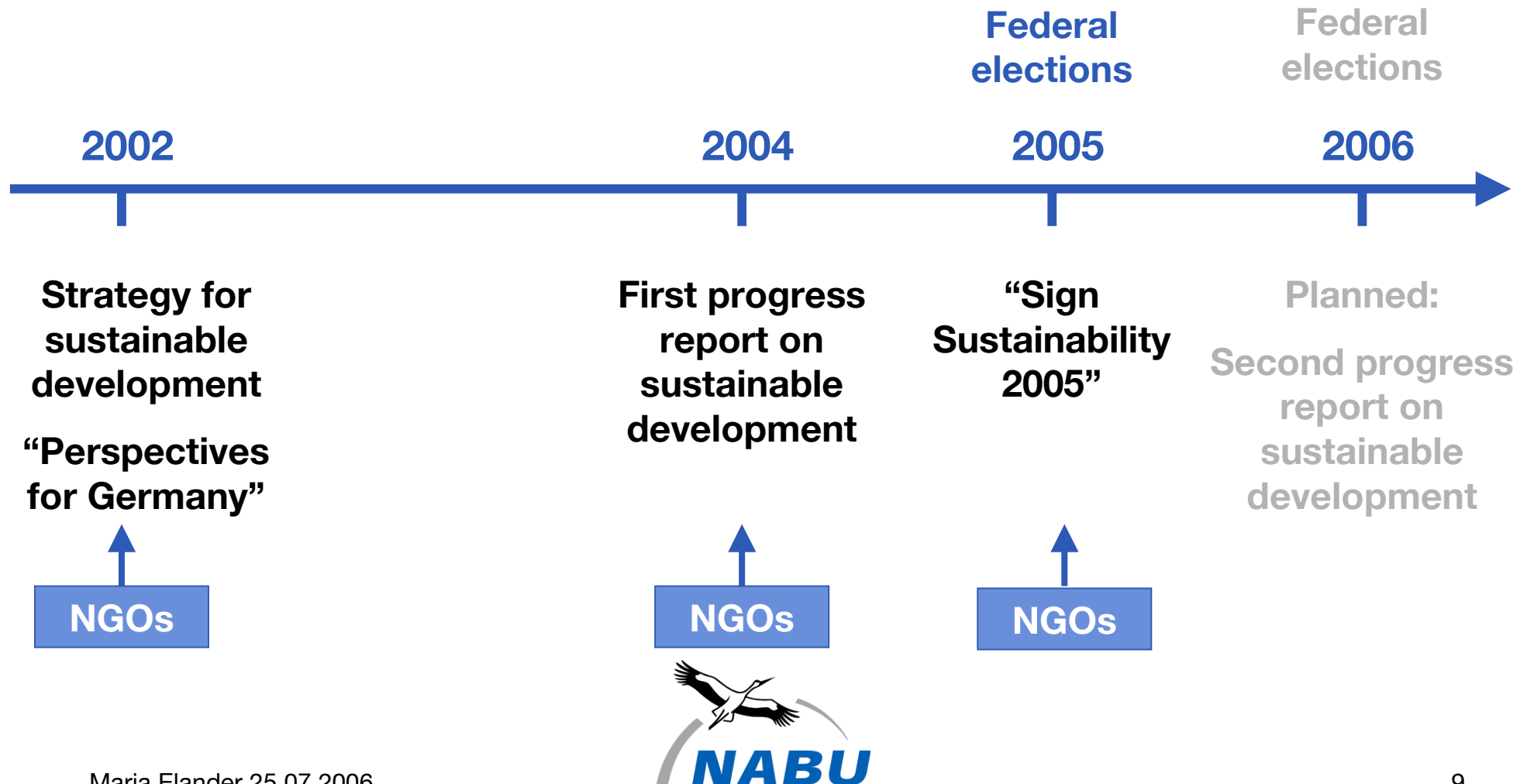
# Sustainable Development in German Policy Making

## Parliamentary Advisory Board for Sustainable Development

- First established in the previous legislative period, re-established 16.4.2006
- 20 members of the parliament (+20 vice members)
- Tasks
  - accompanying the discussion on sustainable development and the further development of the SSD
  - recommendations for mid- and long-term planning regarding issues relevant for sustainable development



# A Strategy is Born and Enhanced



# Perspectives for Germany – A Strategy for Sustainable Development

The most important elements put forward by the strategy can be summarised as

- **management rules** for sustainability, which in conjunction with
- the **indicators and targets** and also
- a regular **monitoring system** to measure results

form the **management concept for sustainable development.**



# Perspectives for Germany – A Model for Sustainable Development

## Intergeneration equity

- Economical approach to using natural resources
- Quantum leap in energy and resource efficiency needed (Factor 4/ Factor 10)

## Quality of life

- intact environment
- good schools, safe towns and cities
- jobs and opportunities for entrepreneurial initiatives
- consumer protection (agricultural policy)



# Perspectives for Germany – A Model for Sustainable Development

## Social cohesion

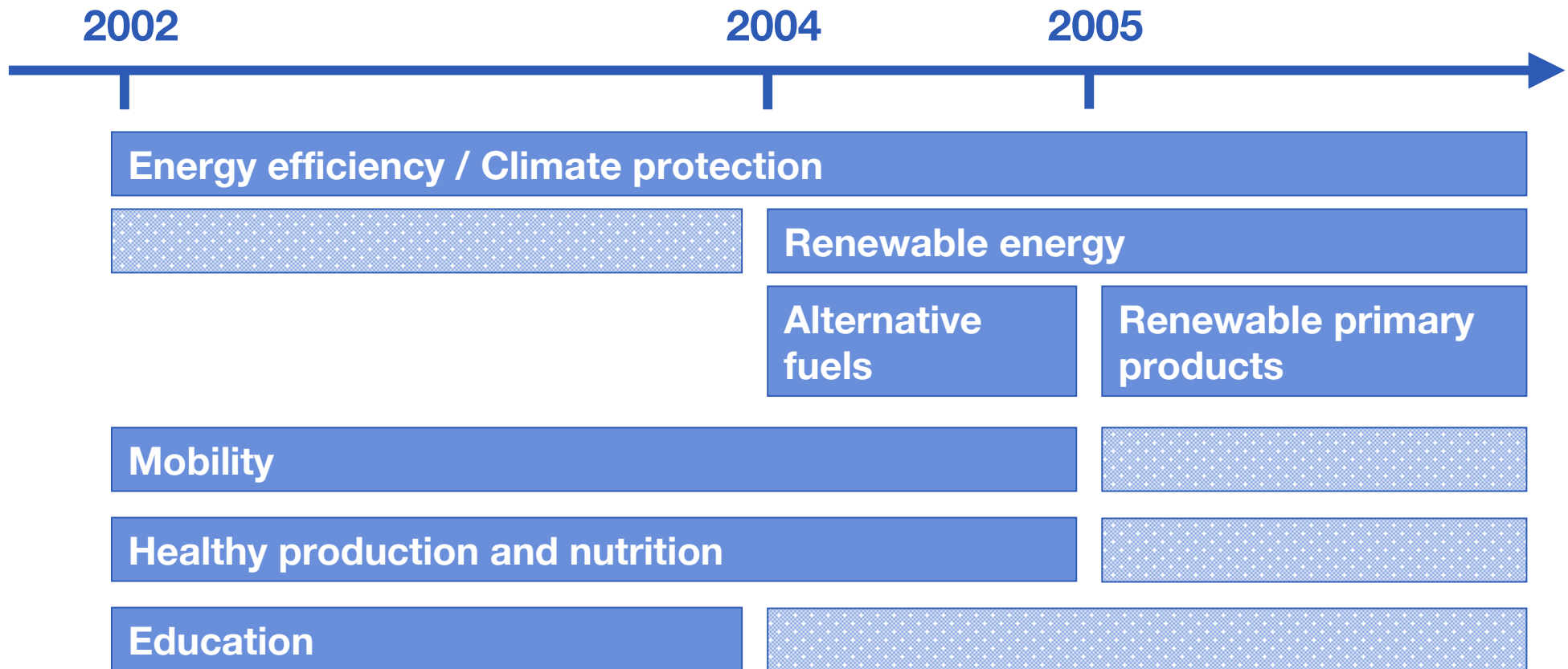
- preventing poverty and social exclusion
- preventing society being split into winners and losers
- possibility for all citizens to take part in social and political life

## International responsibility

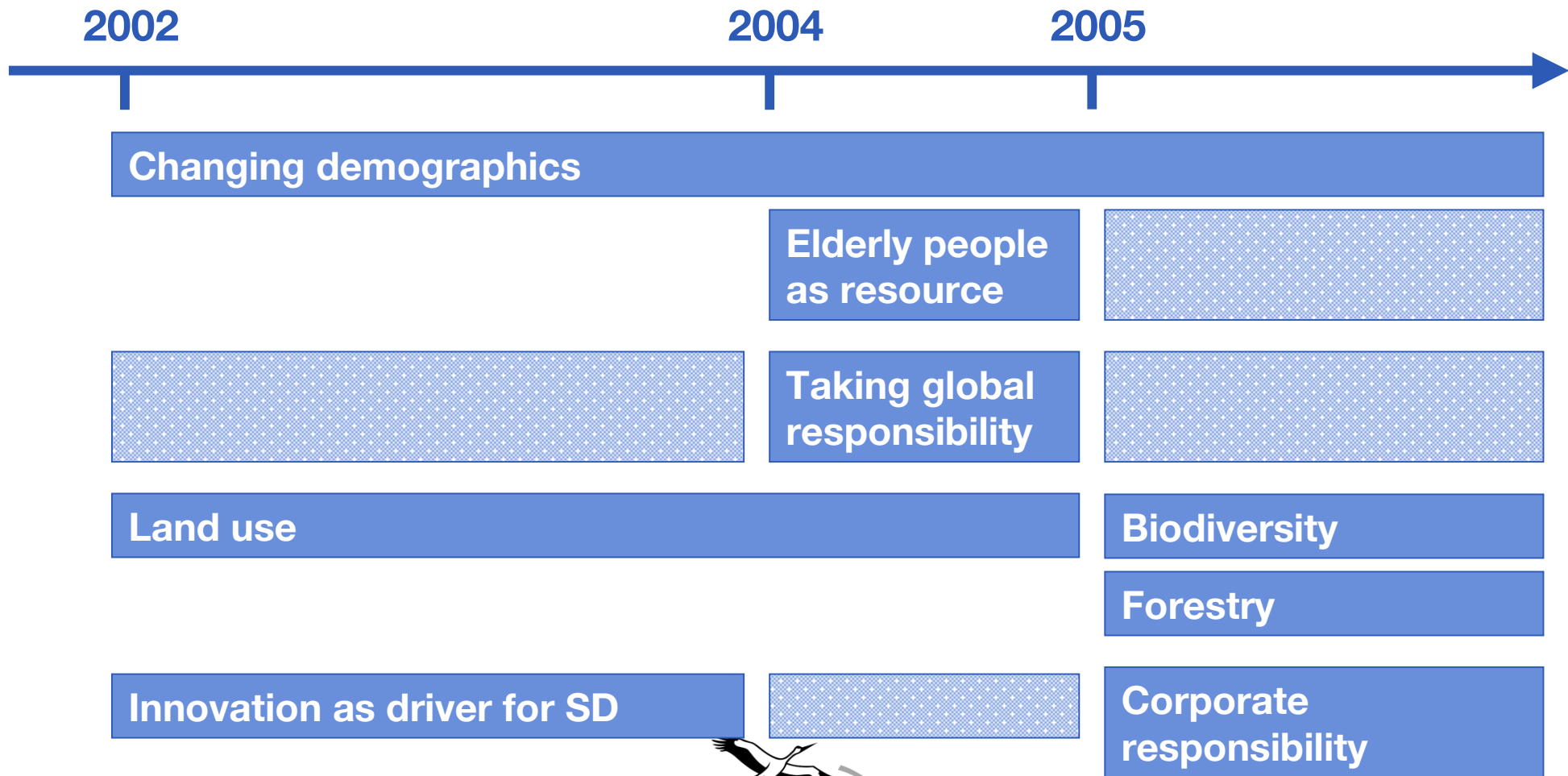
- fighting poverty
- strengthening humanitarian aid
- intensifying developmental collaboration and global environmental protection



# Focus Areas for Sustainable Development



# Focus Areas for Sustainable Development



# 21 Indicators for the 21st Century

## Climate Protection

- SSD: 21% reduction of the 6 Kyoto-Gases until 2008-2012 compared to 1990
- National target: 25% reduction until 2005
- EU-Target: 30% reduction until 2020

Green NGOs and RNE (among others) consider a 40 % reduction in CO<sub>2</sub> emissions until 2020 necessary.  
German NAP not ambitious enough.



# 21 Indicators for the 21st Century

## Renewable energy

- 4,2% of the total primary energy supply until 2010 (doubling compared to 2000)
- 12,5% of the electricity consumption until 2010 (doubling compared to 2000)
- 20% of the electricity consumption until 2020
- 50% of energy consumption until 2050

50% renewable energy until 2050 is not enough. Larger potentials in efficient energy production and consumption (e.g. due to cogeneration and modernisation of buildings).



# 21 Indicators for the 21st Century

## Land use

- Reduction of the expansion of land use to 30 hectare per day until 2020

Target ambitious (131 hr/day in 2000, 105 hr/day in 2002) but concrete actions missing. Strategy for reduced land use urgently needed (e.g. phasing out subsidies, that increase land use, development of management plans for renaturalisation, dealing with demographic changes).



# 21 Indicators for the 21st Century

## Biodiversity

SSD:

- Stabilisation of high level until 2015  
Corresponding to the level from early 70s  
Population of 51 selected bird species as indicator

Indicator was extended in cooperation with NGOs (11 instead of 51 species). [Note: the German Government presented a strategy for biodiversity in Mai 2007]. In order to meet the target, other main targets in the SSD (e.g. land use, organic farming, mobility) must be reached.



# 21 Indicators for the 21st Century

## Education

- Increased 25-year-olds with academic degree (5,8% in 2003)
  - 10,0% in 2010 and 20,0% in 2020
- Reduced 25-year-olds without secondary school (14,2% in 2003)
  - 9,3% in 2010 and 4,6% in 2020
- Increased number of fresh men (35,7% in 2003)
  - 40% in 2010

Indicators are unsuitable since they don't address quality and contents of the education and not cover all educational areas.



# 21 Indicators for the 21st Century

## Mobility and Transports

- Reduction of passenger traffic (compared to 1999)
  - **90% until 2010, 80% until 2020**
- Reduction in goods traffic (compared to 1999)
  - **98% until 2010, 95% until 2020**
- Shifting goods traffic from road to rail and ship
  - **Rail: 25% until 2015 (doubling compared to 1997)**
  - **Ship: 14% until 2015**

No real strategy for decoupling from transports and economic growth. No explicit promotion of rail in the federal transport network plan. Too much focus on personal transports.



# 21 Indicators for the 21st Century

## Alimentation/Organic Farming

- Increase in organic farming
  - 20% of the area under cultivation until 2010

Ambitions Target (tendency rather 6-7% until 2010).  
Problem with low market demands. However, lately increasing demand for organic products because of discounter involvement and food scandals.  
Problem with GMO impurities (no strategy for prevention).



# Outlook – 2006 and Beyond

## The sustainability process is carried on!

- Further development of the strategy
- Recognised institutions for sustainable development are maintained

## Concentrated focus areas and sustainability discussion?

- Consequences of demographic changes
- Energy efficiency and climate change
- Steps towards a sustainable use of natural resources

## Next steps?

- Monitoring of the progress of the 21 indicators [Note: Report published in April 2007]
- Revision of the strategy for sustainable development in 2008



## Further Information [subsequently added]

- Monitoring Report of the 21 indicators in the SSD (April 2007)  
[http://www.destatis.de/download/d/ugr/Internet\\_Nachhaltigkeit.pdf](http://www.destatis.de/download/d/ugr/Internet_Nachhaltigkeit.pdf)
- Five years Strategy for Sustainable Development – Balance by green NGOs (May 2007)  
<http://www.nachhaltigkeitscheck.de/cms/upload/pdf/StellungnahmeIndikatorenbericht070520.pdf>



## Further Information

- German Council for Sustainable Development (RNE)  
[www.nachhaltigkeitsrat.de/english.html](http://www.nachhaltigkeitsrat.de/english.html)
- Stakeholder Dialogue (federal Government)  
[www.dialog-nachhaltigkeit.de](http://www.dialog-nachhaltigkeit.de)
- Green NGOs accompanying the sustainability discussion  
[www.nachhaltigkeits-check.de](http://www.nachhaltigkeits-check.de)
- NABU  
[www.NABU.de/nachhaltigkeit](http://www.NABU.de/nachhaltigkeit)



**Thank you for your attention!**

**Maria Elander**

NABU

Invalidenstr. 112

D-10115 Berlin

Phone: +49 30/284 984-40

e-mail: [Maria.Elander@NABU.de](mailto:Maria.Elander@NABU.de)



## All 21 Indicators

1. **Energy and raw materials productivity**
2. **Emissions of the six greenhouse gases covered by the Kyoto Protocol**
3. **Proportions of energy consumption from renewable energy sources**
4. **Increase in land use for housing and transport**
5. **Development of stocks of selected animal species**
6. **Public finance deficit**
7. **Gross capital formation ratio**
8. **Private and public expenditure on research and development**
9. **25-year-olds with completed education and university entrance rate**
10. **Gross domestic product**



## All 21 Indicators

11. **Transport intensity and proportion of freight transported by rail**
12. **Proportion of organic farming and nitrogen surplus for the whole agricultural sector**
13. **Concentrations of air pollution**
14. **Satisfaction with health**
15. **Number of burglaries involving a break-in**
16. **Employment rate**
17. **Full-time day-care facilities**
18. **Comparison of gross annual earnings of women and men**
19. **Foreign school-leavers not gaining a school-leaving certificate (Hauptschule)**
20. **Expenditure on development cooperation**
21. **EU imports from developing countries**

